

Incoming or Outgoing Load Break Switch Unit up to 24 kV

Introduction

IM and IMC are part of SM6 product range. This SM6 range is made up of modular units and used for the MV/LV substation in secondary distribution system up to 24 kV.

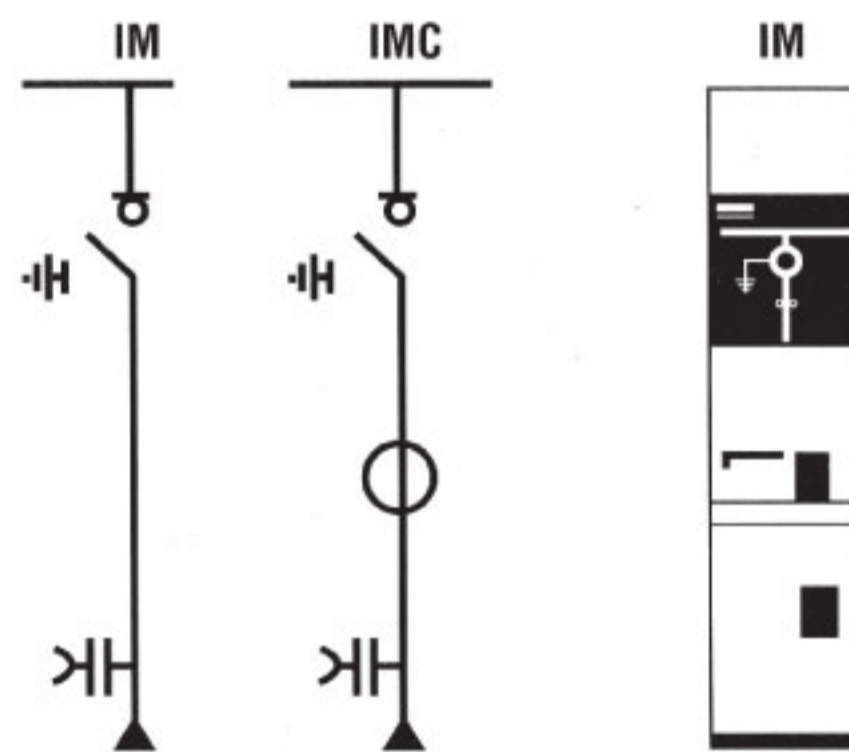
Application :

IM is usually applied for incoming or outgoing switchgear for on load switching. IMC is IM type cubicle with additional current transformer for measurement. (for overload protection please contact us).

This IM or IMC is normally installed together in the system with other part of SM6 product range such as QM, QMC, CM, DM1 DM2, etc., in accordance with the design of a distribution system.

Basic Equipment :

- SF6 Functional load break switch and earthing switch
- Three phase busbar 630 A
- CIT & CI2 operating mechanism (IM)
- CI1 operating mechanism (IMC)
- Voltage indicators
- Heater 50 W, 220V
- Three current transformers (IMC)



Standard Recommendation

IEC standard :
 62271-200, 62271-103,
 62271-105, 60255,
 62271-100, 62271-102
 61869-2, 61869-3,
 60044-8, 62271-206,
 62271-304

UTE standard for 24kV :
 NFC 13.100, NFC 13.200,
 NFC 64.130, NFC 64.160

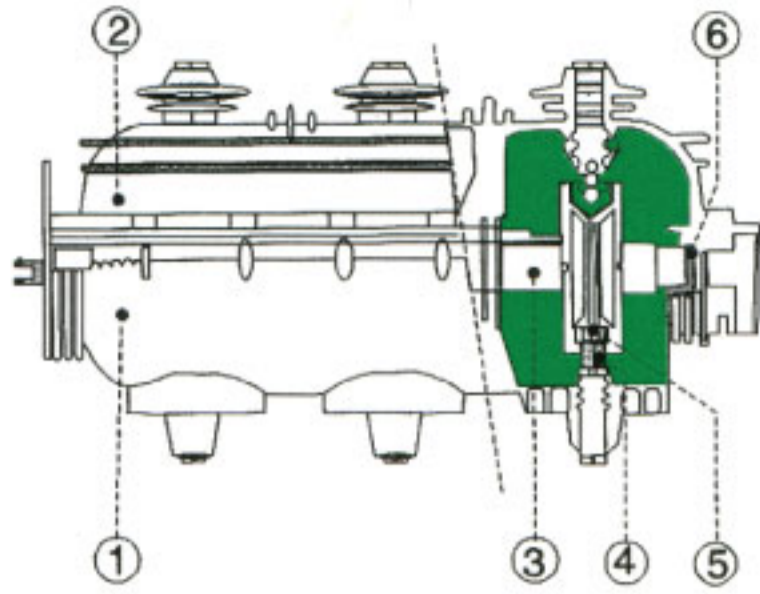
EDF specification for 24kV
 HNI 64-S-41, 64-S-43

Colour :
 White RAL 9003

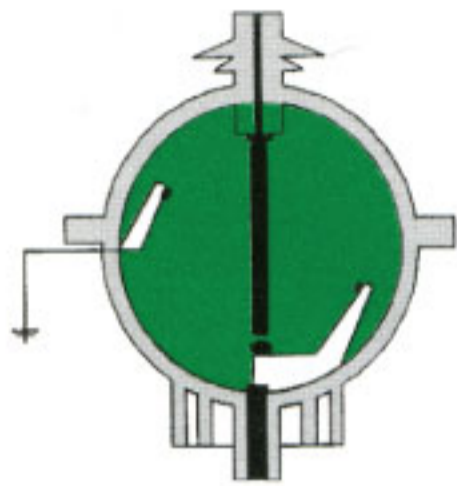
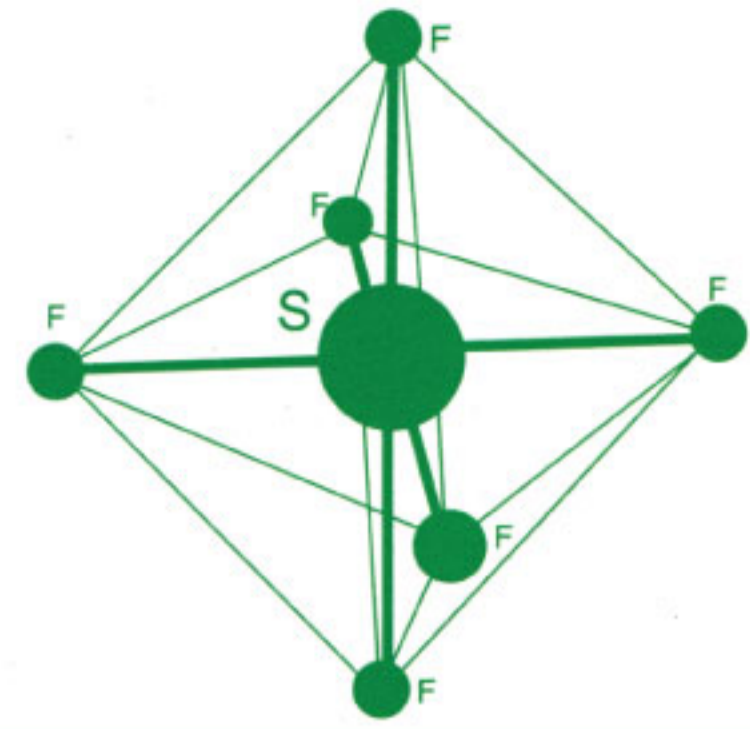
Characteristic :

Rated maximum Voltage (kV)	12		24	
Rated voltage (kVrms)	7.2	12	17.5	24
Rated insulation level				
- 50Hz for 1 min (kVrms)	20	28	38	50
- impulse 1.2/50 μS (kVrms)	60	75	95	125
Rated current				
- load break switch (A)	400/630		400/630	
- busbar (A)	630		630	
Short time withstand current				
- for rated current 400 A (kA/1s)	12.5/14.5		12.5/14.5	
- for rated current 630 A (kA/1s)	12.5/14.5		12.5/14.5	
	16		16	
	20		20	

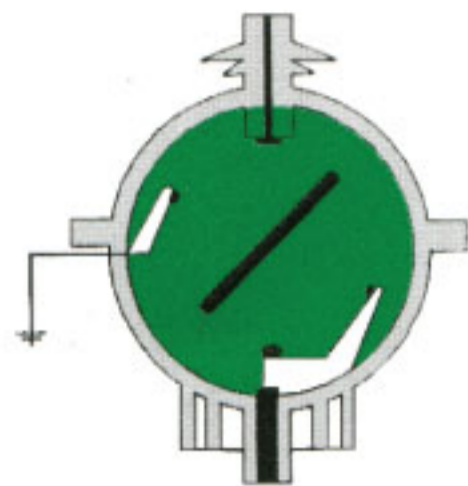
Load break switch or disconnector and earthing switch :



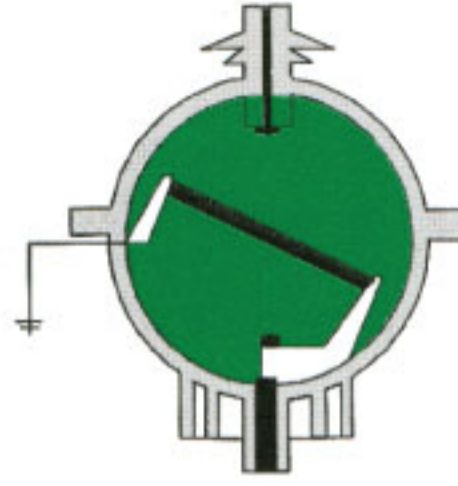
- 1 enclosure
- 2 cover
- 3 operating shaft
- 4 fixed contact
- 5 moving contact
- 6 seal



Contacts closed



Contacts open



Contacts earthed

Sm6 load break switches and earthing switches use sulphur hexafluoride gas (SF6) for insulation and breaking. The active parts are placed in insulated enclosure in accordance with the definition of IEC 56 / Appendix EE (1987 edition) for sealed pressure system. These devices offer remarkable characteristic :

- long life service
- maintenance – free active parts
- high electrical endurance
- over – voltage levels very low
- safety operation

Overall dimension	IM
Width	500 mm
Depth	1030 mm
Height	1600 mm
LV compartment (h')	450 mm
Approximate weight	130 kg
Cable connect. Height (measure from floor)	945 mm

Cable entry or exit

- Through left or right side
- Rear or front with conduit
- Top entry and bottom entry type (for top entry the depth of cubicle is added by 600mm and the height is added by 400mm)

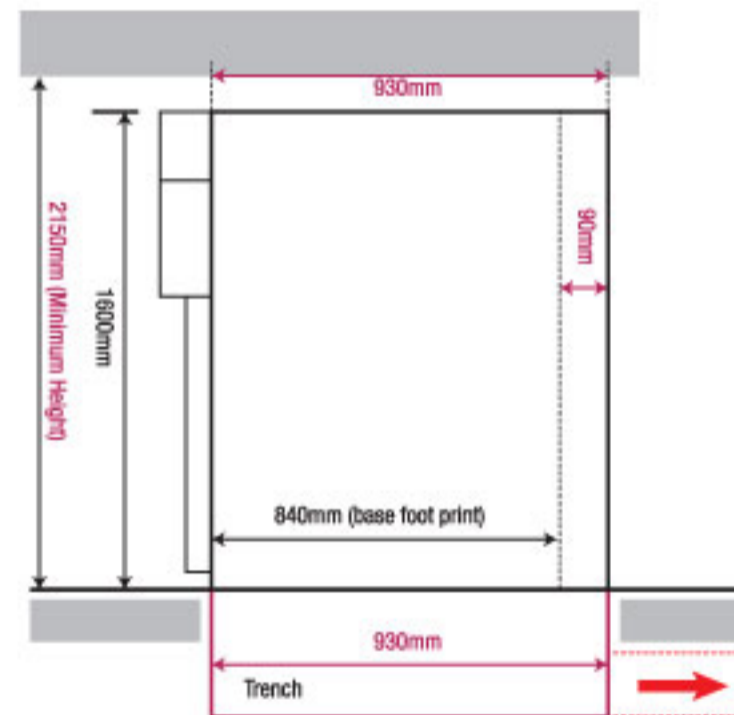
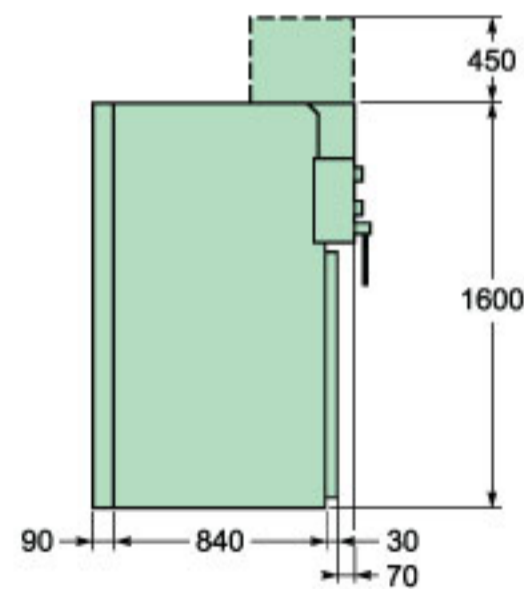
Cabling :

- Through trenches
- Type of cables :
- single core or three cores (for IM only)

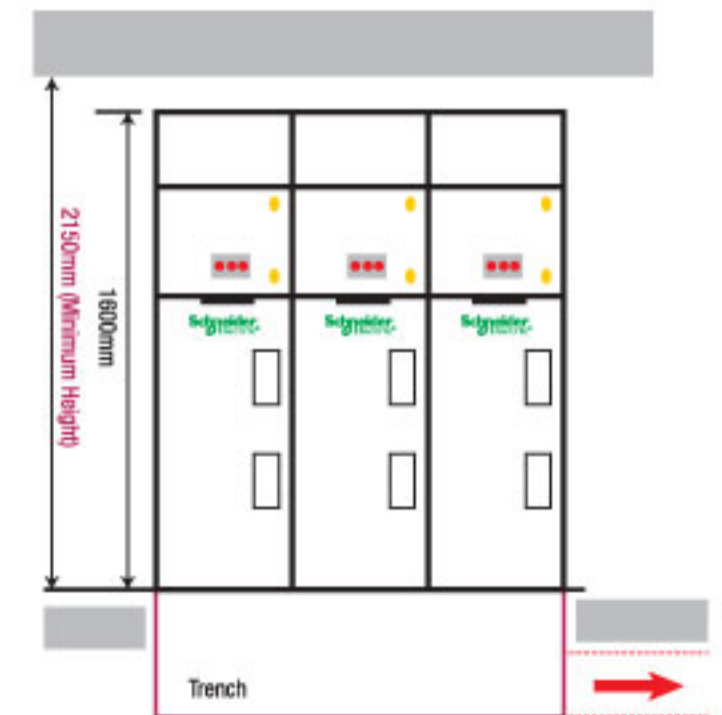
Auxiliary power supply :

For electrical operating mechanism (when applicable)

- DC : 110 V or AC : 220 V 50Hz
- 24 V 110 V 50 Hz
- 48 V

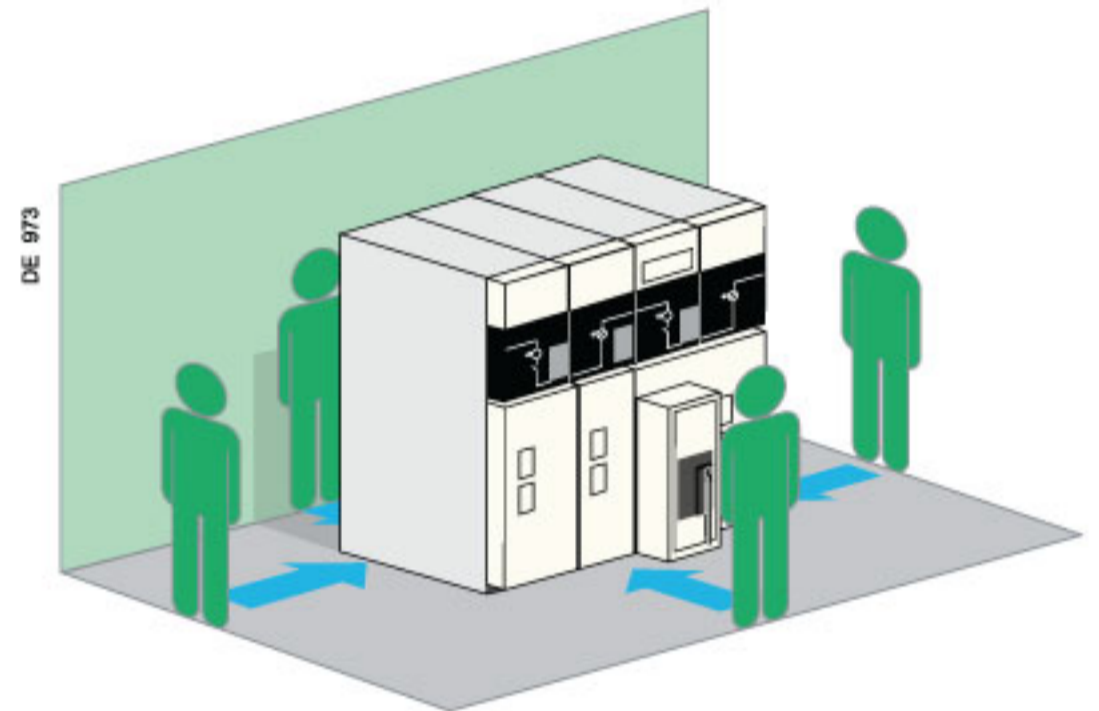


Side View



Front View

16 kA/1s as IAC : A - FLR (bottom exhaust gas)



Example of installation of an SM6-24 switchboard installed in the middle of a room downwards exhaust 16 kA 1 s, IAC: A-FLR. 4-sides internal arc protection

PT Schneider Indonesia

Sales Office

Jakarta
Ventura Building 7th Floor, Jl. R.A. Kartini Kav.26, Cilandak, Jakarta - 12430
Ph. (62) (021) 7504406
Fax. (62) (021) 7504415/16

Customer Service
Ph. (62) (021) 7504406 ext 2381, 2384, 2389
(62) (021) 7504598, (62) (021) 7504612

Infrastructure Business
Jl. Pulo Buaran Raya, Blok III EE Kav.2-3-6 Kawasan Industri Pulo Gadung, Jakarta - 12430
Ph. (62) (021) 245 75 700
Fax. (62) (021) 460 32 01

APC by Schneider Electric
PT. Schneider Electric IT Indonesia, Ventura Building 1st Floor
Jl. R.A. Kartini Kav.26, Cilandak, Jakarta - 12430
Ph. (62) (021) 759 02911
Fax. (62) (021) 759 02912

Balikpapan
Komplek Ruko Little China Blok AB 6 No.7, Balikpapan Baru, Balikpapan - 76114, Kaltim
Ph. (62) (0542) 876722
Fax. (62) (0542) 873709

Bandung
Komplek Mal Setrasari Blok B 2/17 Jl. Prof. Sutami, Bandung - 40164
Ph. (62) (022) 2016122
Fax. (62) (022) 2019133

Batam
Batamindo Industrial Park, Jl. Beringin Blok 4 Muka Kuning, Batam Island - 29433
Ph. (62) (0770) 611 133
Fax. (62) (0770) 611 134

Cikarang
East Jakarta Industrial Park (EJIP) Plot 4B no.1-2, Lemahabang, Bekasi - 17550, Jawa Barat
Ph. (62) (021) 8970203-8
Fax. (62) (021) 8970209, 897 0085

Makassar
Gedung Fajar Graha Pena Lt. 09 Kav. 902-903, Jl. Urip Sumohardjo No.20, Makassar - 90234
Ph. (62) (0411) 420760, 457657
Fax. (62) (0411) 420759

Medan
UNIPLAZA Building, East Tower, 3rd Floor Jl. Letjend. M.T. Haryono A-1, Medan - 20231
Ph. (62) (061) 457 9006, 455 5061
Fax. (62) (061) 4555153

Palembang
Komp. Ruko PTC Mall Blok B No. 22 Jl. R. Sukanto No. 8A, Palembang - 30114
Ph. (62) (0711) 312002
Fax. (62) (0711) 319669

Pekanbaru
Perumahan Pondok Mutiara Blok D No. 24 Pekanbaru - 28292
Ph. (62) (0761) 880302
Fax. (62) (0761) 880302

Semarang
Gedung Grinatha (Bank Jateng) Lt.2 Jl. Pemuda 142 - Semarang
Ph. (62) (024) 3560230, 3560231
Fax. (62) (024) 3563313

Surabaya
Gedung Graha Pena Lantai 3 Ruang 302 Jl. Jend. Ahmad Yani No.88, Surabaya - 60234
Ph. (62) (031) 8288333 (Hunting)
Fax. (62) (031) 8299901

Sales Representative

Bali
Jl. Muding Mundeh A6, Gatot Subroto Barat, Denpasar - Bali
Ph. (62) 817 767 447 (Mobile)

Lampung
Villa Citra 1 Blok F No.10, Tanjung Karang Bandar Lampung
Ph. (62) (0721) 250152
Fax. (62) (0721) 250152

Website : www.schneider-electric.com
Email : customercare.id@schneider-electric.com
Hotline : 500055

MICLEAF382002EN